

Object01_lib for Rwy12

By Stephen Legg
www.fs9world.netfirm.com

In Object01_lib.bgl you will find a collection of objects, which can be added to fs2004 airports using Rwy12 object placer or manually using XML. Some of the objects have night lighting, I think 3 of them. There aren't as many objects as I would have liked, But I have less time these days. This will also be my last library file for some time; I'm now going to concentrate on getting my Airport Project finished; now most of these objects are done.

I hope you find them useful.

The Objects

Here are all the objects as they appear in Rwy12.

Bus – needs painting to what ever scheme you like.



Caravan01



Caravan02



Landrover90 Green



Landrover90 Red



Landrover110 Green



Landrover110 Red



Cone – Can be used to signify intersections on grass taxiways or placed around aircraft.



Pallet – Stack of used pallets



Picnic Table – A nice Picnic Table



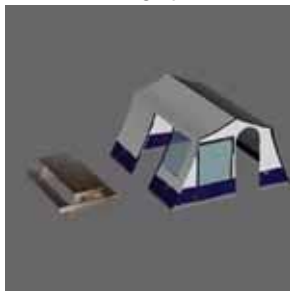
Fuel Pump – A Small airfield fuel pump by Paul Smith (aka pks1414) thanks Paul



Industrial Skip



Tent



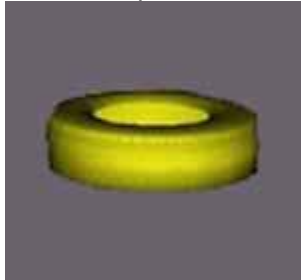
Tow Caravan



13m Trailer – Paint as TNT



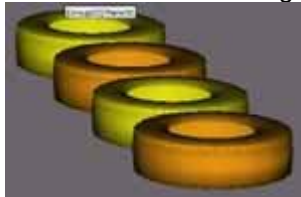
Tyres (or Tires for those who spell it like that ;-) – A single Tyre



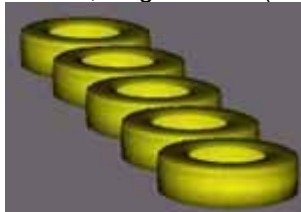
Tyres 4 – Row of tyres can be used at the end of grass runways, they are an average tyre size can be rescale bigger in Rwy12 if desired.



Tyres 4 – Same as above but Orange and Yellow



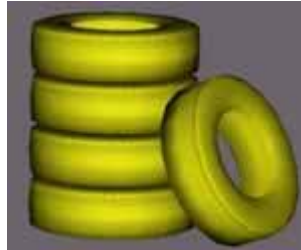
Tyres 5 – Same as above but five of them, single colour (or color for those who spell it like like)



Tyres Stack – A stack of Tyres in Gray



Tyres Stack – Same as above but Yellow



Vauxhall/Opel Zafira



Chart of important stuff

NAME	GUID	*DID
Bus	621602D5CB690567AE EBE4235533C691	400M
Caravan01	621602D5CB690567AE EBE4235533C692	400M
Caravan02	621602D5CB690567AE EBE4235533C693	400M
Landrover90 Red	621602D5CB690567AE EBE4235533C694	400M
Landrover110 Gn	621602D5CB690567AE EBE4235533C695	400M
Landrover90 Gn	621602D5CB690567AE EBE4235533C696	400M
Landrover110 Red	621602D5CB690567AE EBE4235533C697	400M
Cone	621602D5CB690567AE EBE4235533C698	200M
Pallet	621602D5CB690567AE EBE4235533C699	200M
Picnic Table	621602D5CB690567AE EBE4235533C69A	200M
Fuel Pump	621602D5CB690567AE EBE4235533C69B	200M
Industrial Skip	621602D5CB690567AE EBE4235533C69C	200M
Tent	621602D5CB690567AE EBE4235533C69D	200M
Tow Caravan	621602D5CB690567AE EBE4235533C69E	400M
13m Trailer	621602D5CB690567AE EBE4235533C69F	400M
Tyres	621602D5CB690567AE EBE4235533C6A0	3000M
Tyres 4	621602D5CB690567AE EBE4235533C6A1	3000M
Tyres 4 Multi	621602D5CB690567AE EBE4235533C6A2	3000M
Tyres 5	621602D5CB690567AE EBE4235533C6A3	3000M
Tyres Stack Gray	621602D5CB690567AE EBE4235533C6A4	200M
Tyres Stack Yellow	621602D5CB690567AE EBE4235533C6A5	200M
Zafira	621602D5CB690567AE EBE4235533C6A6	400M

*DID = Distance it Disappears in FS9, helps with Frames per Second

Installation

Copy the rwy12 folder to your main rwy12 folder.

Copy the Addon Scenery folder to your main FS9 folder.

Feedback

Please send any feedback to ste.fs@ntlworld.com

Thanks to

Arno Gerretsen for Library Creator and MDL Tweaker

Paul Smith for the use of his Fuel Pump and Textures

User Licence

This Object library is released as freeware, therefore, it can not be sold individually or as part of a commercial product. But as a freeware user you can do with it what you want, as long as my name, website and email is on any released freeware product.